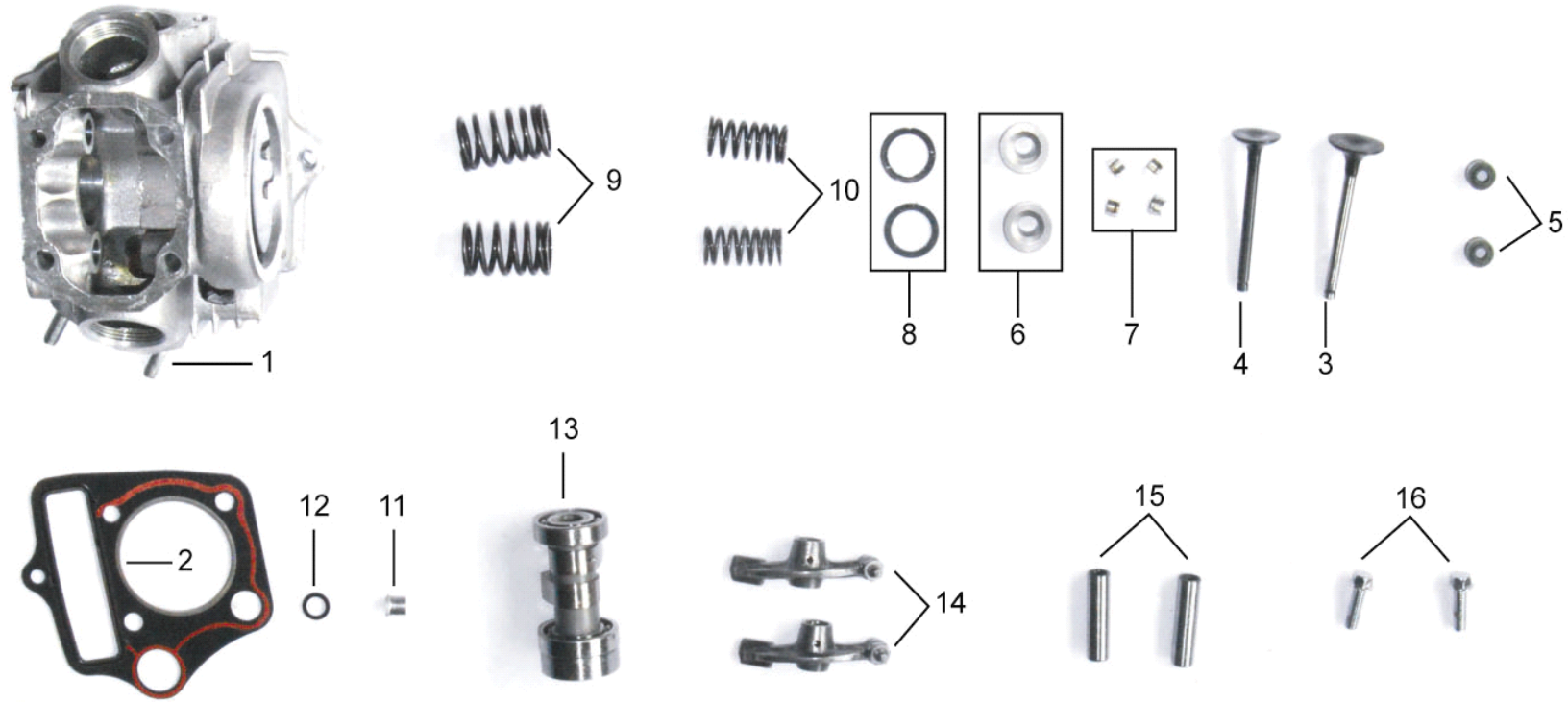
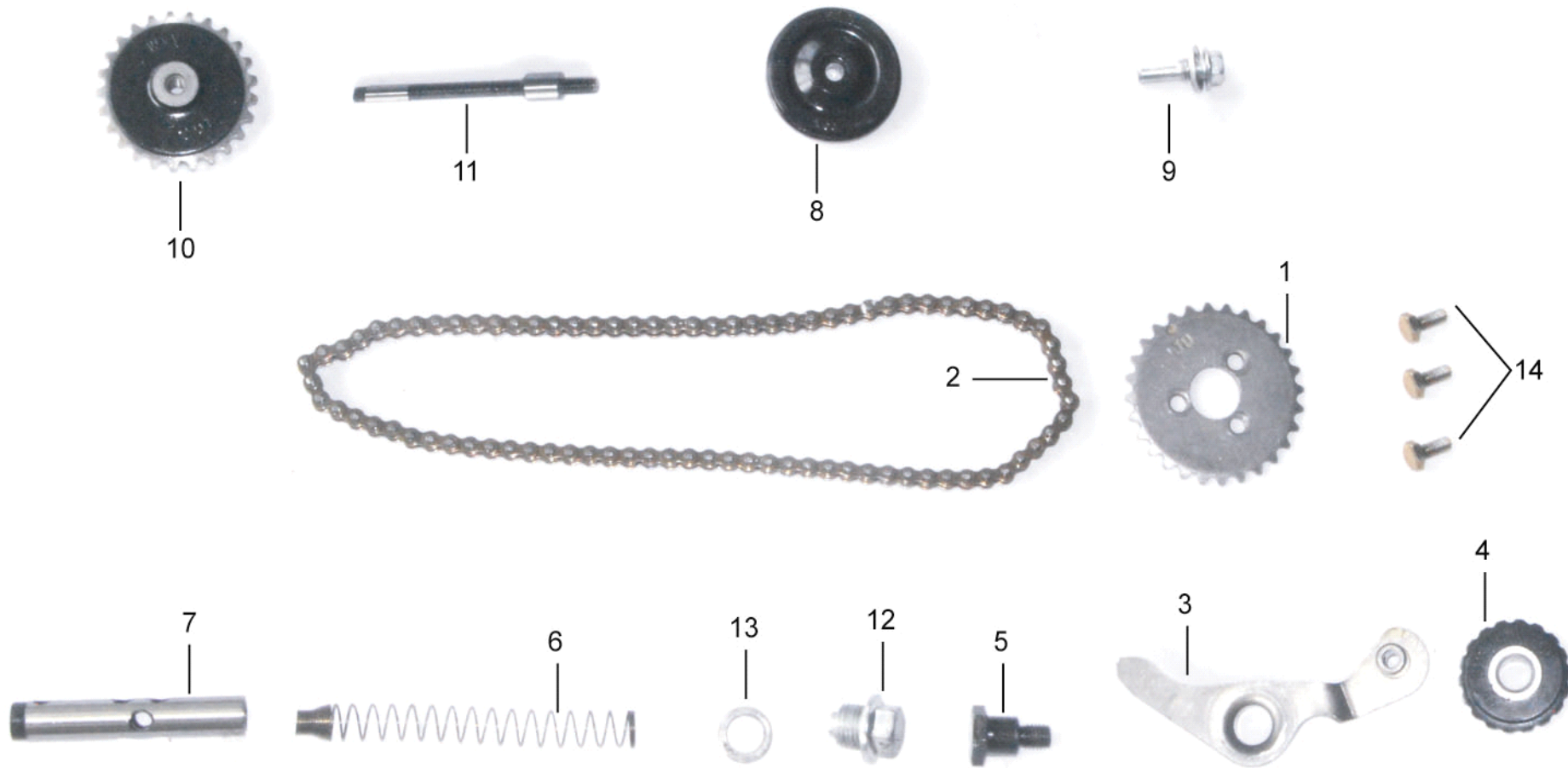


NO.	Part No.	Description in English	Qty	Price
1	XT90GK-147FMF-010001	CYCLDER HEAD COVER	1	1.76
2	XT90GK-147FMF-010002	GASGET	1	0.15
3	XT90GK-147FMF-010003	L.COVER, CYCLDER HEAD	1	1.76
4	XT90GK-147FMF-010004	GASKET, L.COVER	1	0.15
5	XT90GK-147FMF-010005	R.COVER, CYCLDER HEAD	1	1.76
6	XT90GK-147FMF-010006	GASKET, R.COVER	1	0.15
7	XT90GK-147FMF-010007	VALVE COVER	2	0.59
8	XT90GK-147FMF-010008	VALVE COVER"O"RING30.8×3.2	2	0.15
9	XT90GK-147FMF-010009	BOLTM6×110	1	0.29
10	XT90GK-147FMF-010010	SPARK PLUG	1	2.35

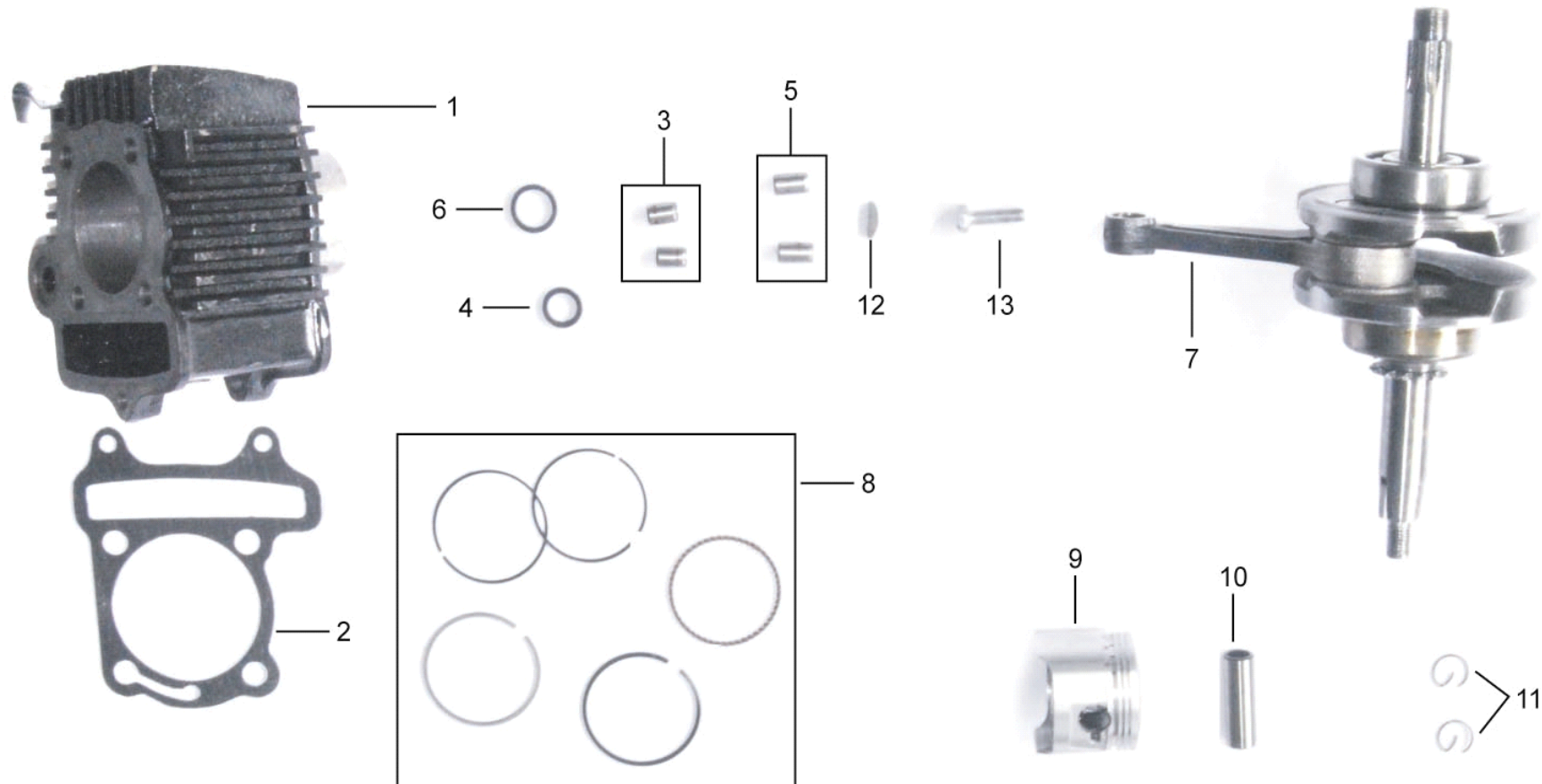


NO.	Part No.	Description in English	Qty	Price
1	XT90GK-147FMF-020001	CYCLDER HEAD	1	47.06
2	XT90GK-147FMF-020002	GASKET	1	0.88
3	XT90GK-147FMF-020003	INLET VALVE	1	3.24
4	XT90GK-147FMF-020004	EXHAUST VALVE	1	3.24
5	XT90GK-147FMF-020005	OIL SEAL	2	0.59
6	XT90GK-147FMF-020006	VALVE SEAT	2	0.59
7	XT90GK-147FMF-020007	VALVE CLIP	4	0.29
8	XT90GK-147FMF-020008	GASKET	2	0.29
9	XT90GK-147FMF-020009	OUTER VALVE SPRING	2	1.47
10	XT90GK-147FMF-020010	INNER VALVE SPRING	2	1.47
11	XT90GK-147FMF-020011	POSITION PIN 8*12	1	0.29
12	XT90GK-147FMF-020012	RECTANGLE SEAL9*11.5*1.5	1	0.29
13	XT90GK-147FMF-020013	CAMSHAFT	1	7.65
14	XT90GK-147FMF-020014	ROCKER ARM	2	1.47
15	XT90GK-147FMF-020015	SHAFT, ROCKER ARM	2	0.29
16	XT90GK-147FMF-020016	BOLT M6×20	2	0.15

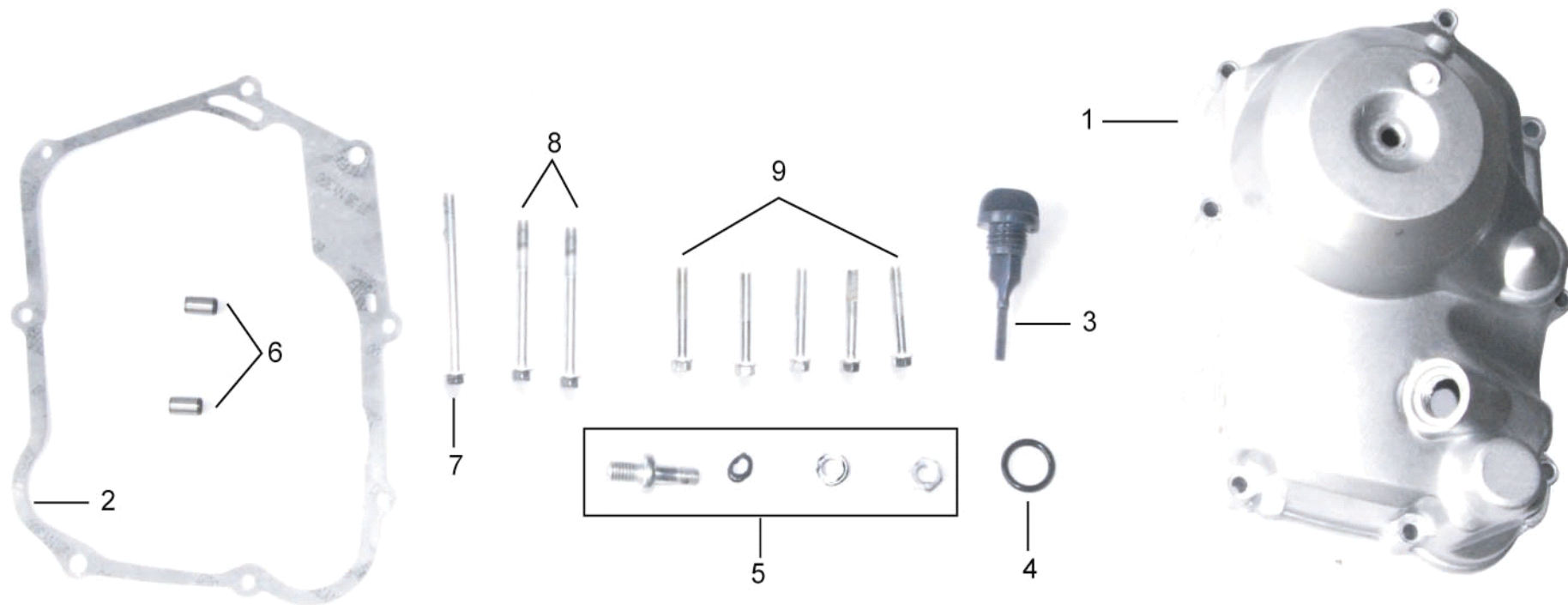


NO.	Part No.	Description in English	Qty	Price
1	XT90GK-147FMF-030001	DRIVE SPROCKET	1	0.74
2	XT90GK-147FMF-030002	TIMING CHAIN	1	3.53
3	XT90GK-147FMF-030003	TIGHTENING ARM	1	0.53
4	XT90GK-147FMF-030004	TIGHTENING RING	1	0.44
5	XT90GK-147FMF-030005	BOLT	1	1.03
6	XT90GK-147FMF-030006	SPRING, GUIDE START CHAIN	1	0.24
7	XT90GK-147FMF-030007	GUIDE, START CHAIN	1	0.59

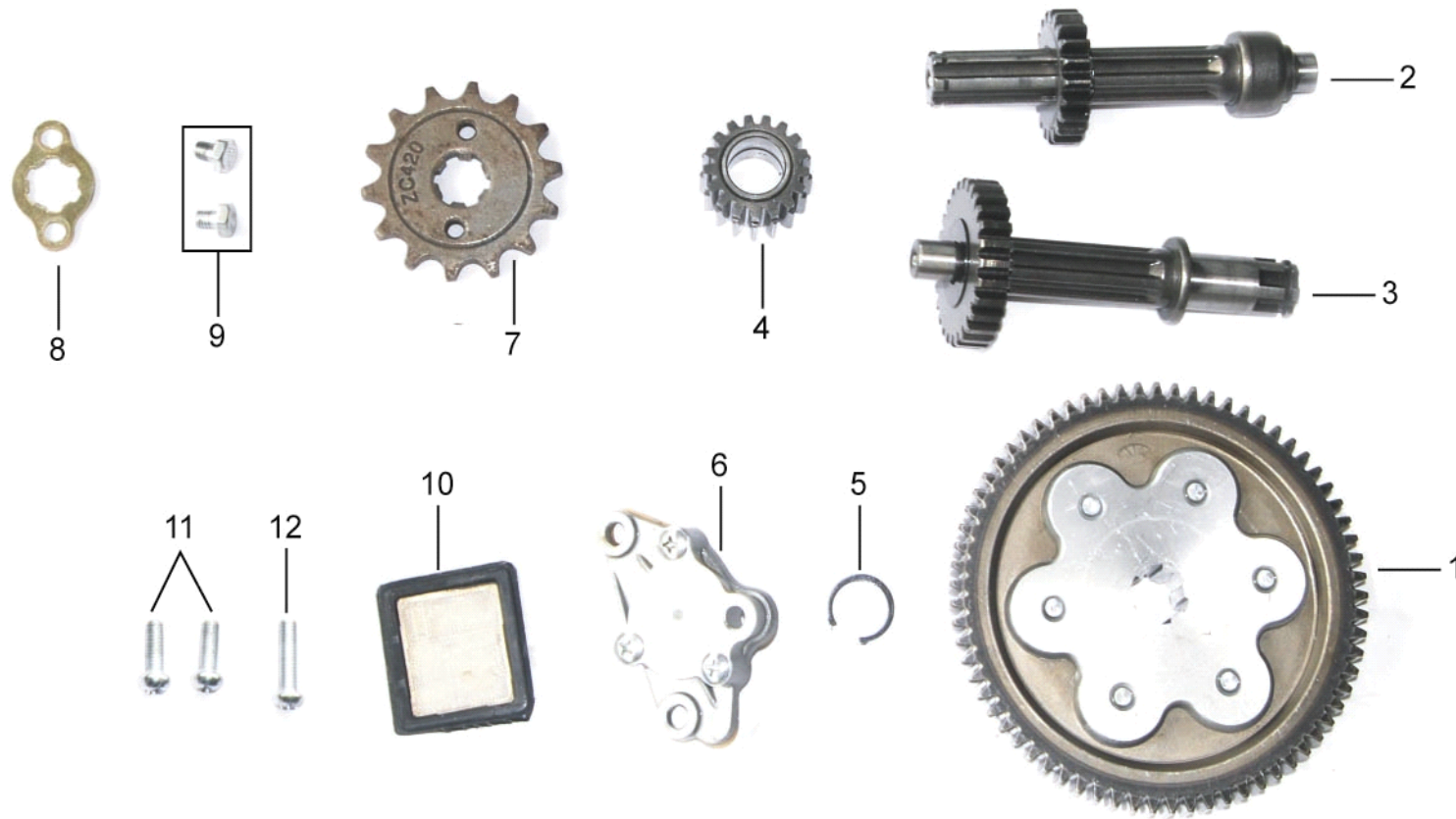
8	XT90GK-147FMF-030008	GUIDE ROLLER	1	0.44
9	XT90GK-147FMF-030009	GUIDE ROLLER PIN	1	0.44
10	XT90GK-147FMF-030010	DRIVE SPROCKET	1	1.18
11	XT90GK-147FMF-030011	SPROCKET SHAFT	1	1.03
12	XT90GK-147FMF-030012	GASKET M14*12.5	1	0.59
13	XT90GK-147FMF-030013	GASKET M14*1.5	1	0.15
14	XT90GK-147FMF-030014	BOLTM6×12	3	0.15



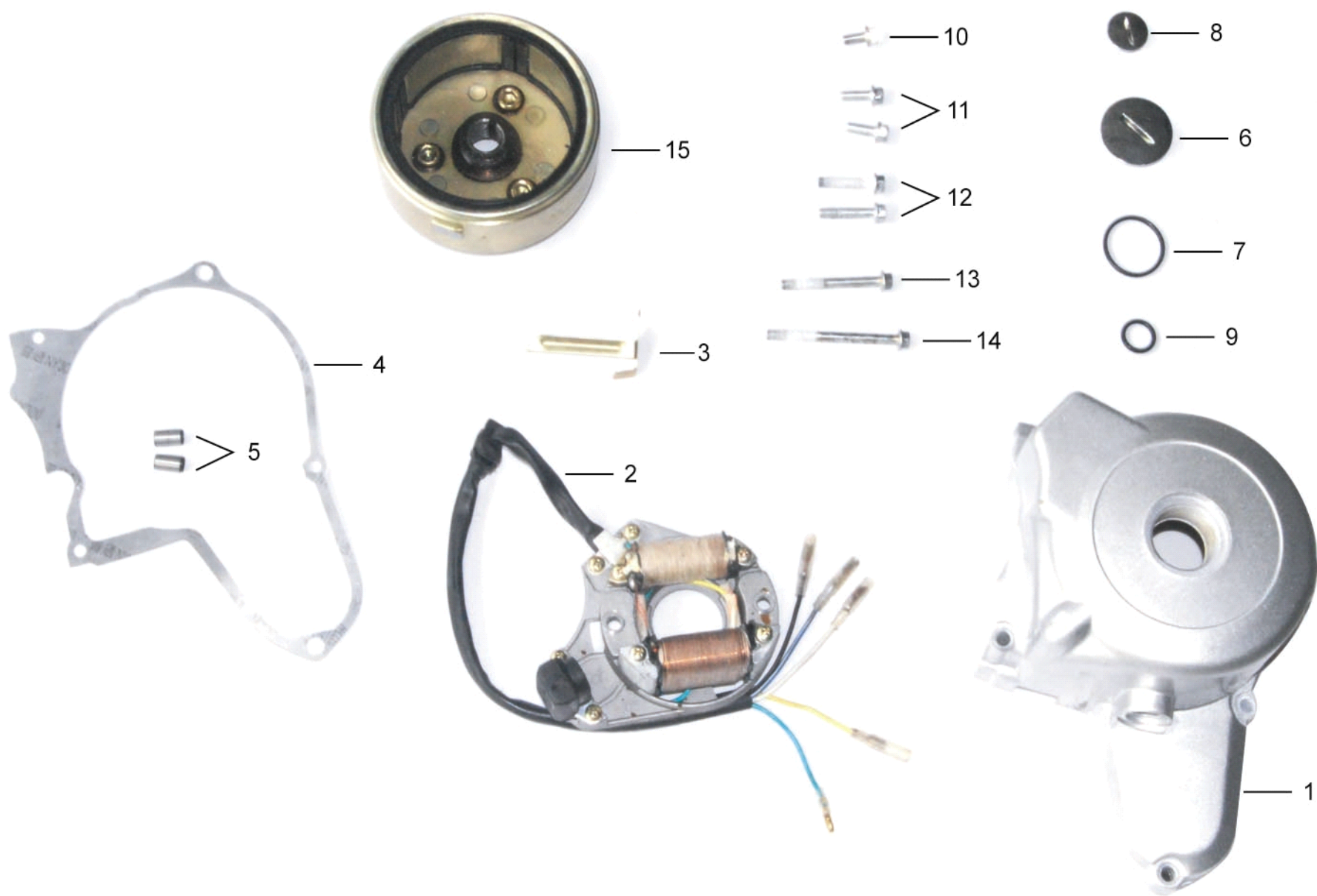
NO.	Part No.	Description in English	Qty	Price
1	XT90GK-147FMF-040001	CYCLDER	1	23.53
2	XT90GK-147FMF-040002	GASKET	1	0.44
3	XT90GK-147FMF-040003	POSITION PIN 8×12	2	0.06
4	XT90GK-147FMF-040004	RECTANGLE SEAL 11.5×15.7×2.4	1	0.74
5	XT90GK-147FMF-040005	POSITION PIN 8×14	2	0.15
6	XT90GK-147FMF-040006	RECTANGLE SEAL 14×5×18.5×2.4	1	0.74
7	XT90GK-147FMF-040007	CRANK	1	29.41
8	XT90GK-147FMF-040008	PISTON RING SET	1	2.94
9	XT90GK-147FMF-040009	PISTON RING	1	2.94
10	XT90GK-147FMF-040010	PISTON PIN	1	0.29
11	XT90GK-147FMF-040011	CIRCLIP PISTON PIN	2	0.15
12	XT90GK-147FMF-040012	KEY	1	0.15
13	XT90GK-147FMF-040013	CROSS SPECIAL BOLT M6×25	1	0.06



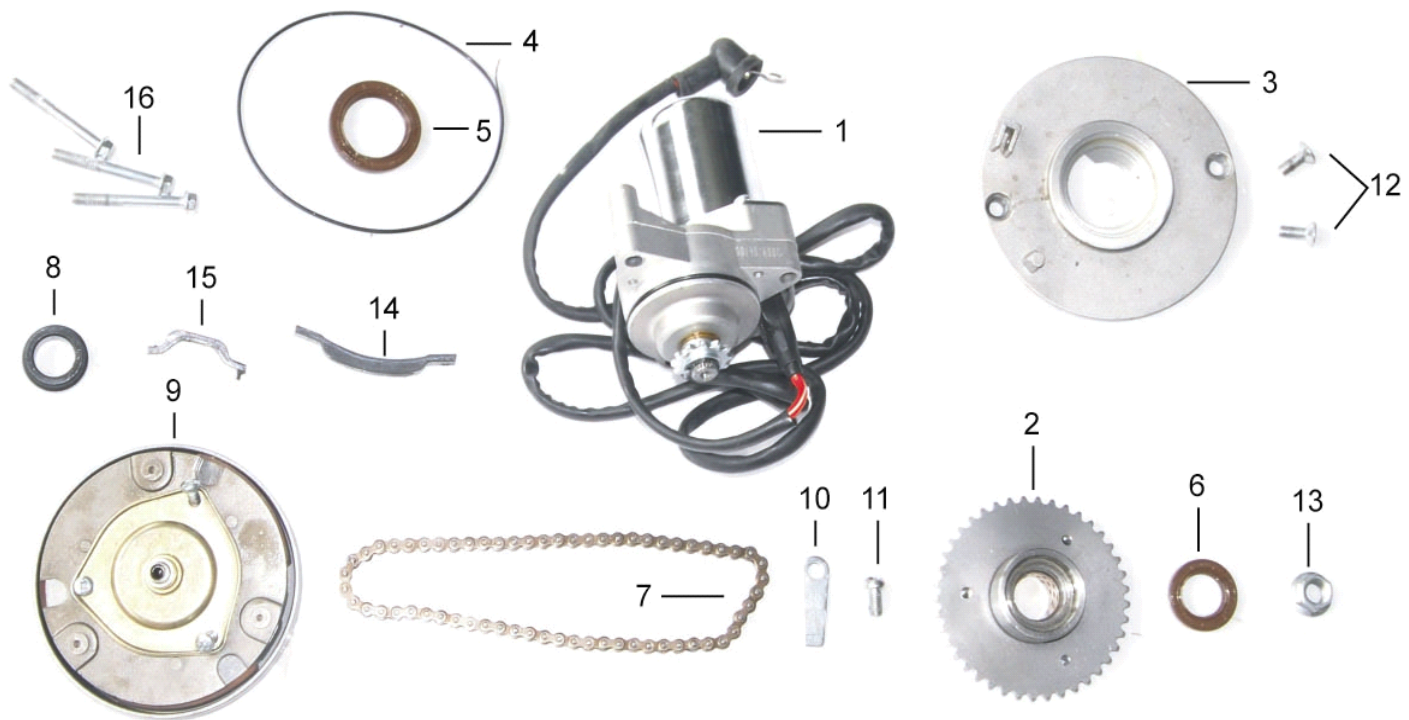
NO.	Part No.	Description in English	Qty	Price
1	XT90GK-147FMF-050001	R,COVER	1	20.59
2	XT90GK-147FMF-050002	GASKET,R COVER	1	0.15
3	XT90GK-147FMF-050003	OIL-RULER	1	0.44
4	XT90GK-147FMF-050004	"O"RING 18×3.5	1	0.09
5	XT90GK-147FMF-050005	CLUTCH ADJUSTING ASSY	1	0.29
6	XT90GK-147FMF-050006	POSITION PIN 8×12	1	0.03
7	XT90GK-147FMF-050007	BOLT M6×80	1	0.09
8	XT90GK-147FMF-050008	BOLT M6×65	1	0.06
9	XT90GK-147FMF-050009	BOLT M6×40	2	0.06



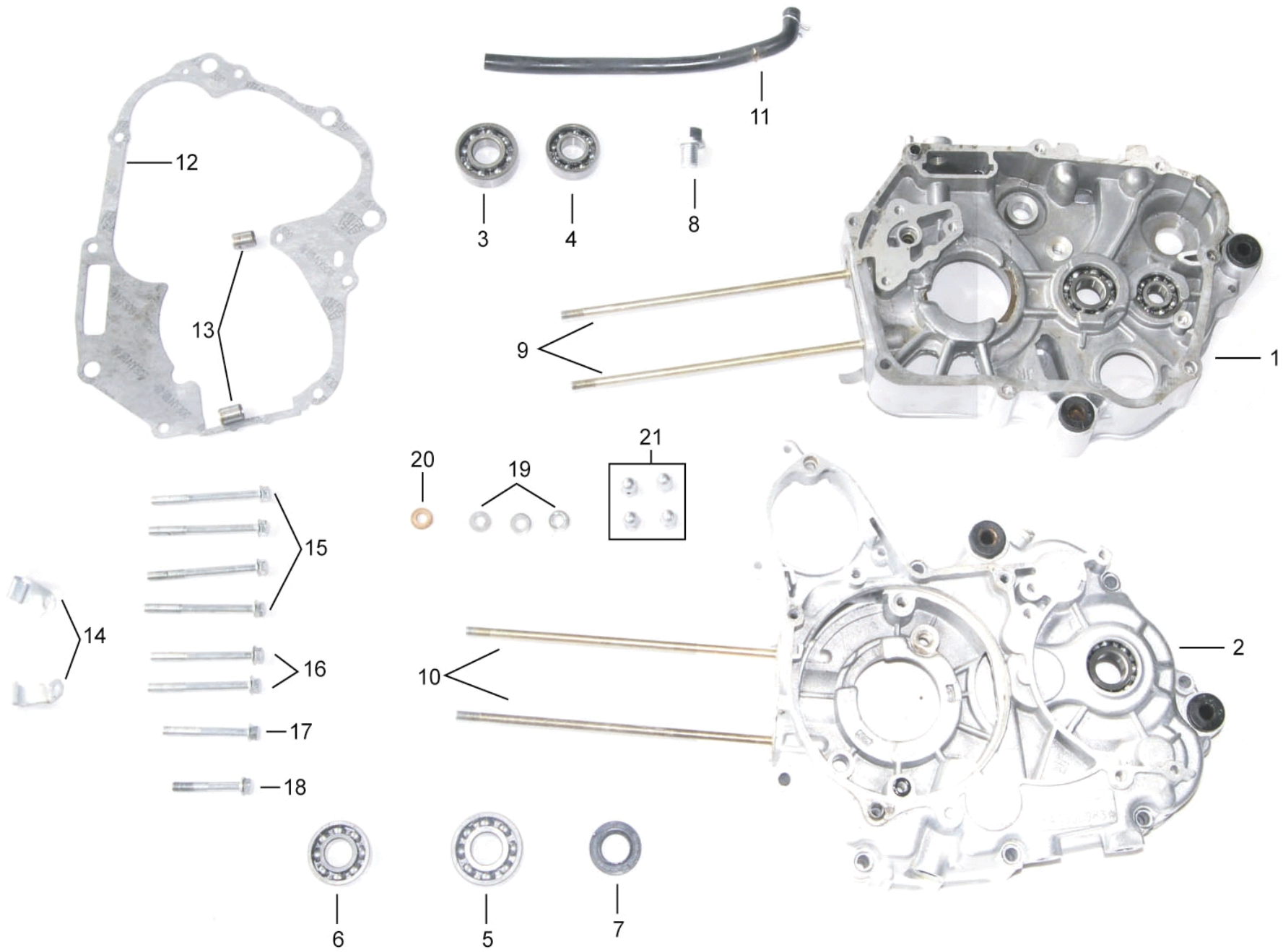
NO.	Part No.	Description in English	Qty	Price
1	XT90GK-147FMF-060001	PRIMARY DRIVEN GEAR	1	8.82
2	XT90GK-147FMF-060002	MAIN SHAFT	1	4.41
3	XT90GK-147FMF-060003	DRIVEN SHAFT	1	5.88
4	XT90GK-147FMF-060004	PRIMARY DRIVE GEAR	1	2.35
5	XT90GK-147FMF-060005	"C"CLIP SPRING	1	0.03
6	XT90GK-147FMF-060006	OIL PUMP	1	2.65
7	XT90GK-147FMF-060007	DRIVE SPROCKET	1	1.47
8	XT90GK-147FMF-060008	SPROCKET PLATE	1	0.29
9	XT90GK-147FMF-060009	BOLT M6×10	2	0.03
10	XT90GK-147FMF-060010	OIL FILTER	1	0.29
11	XT90GK-147FMF-060011	BOLT M6×16	2	0.06
	XT90GK-147FMF-060012	BOLT M6×22	1	0.06



NO.	Part No.	Description in English	Qty	Price
1	XT90GK-147FMF-070001	L, COVER	1	10.29
2	XT90GK-147FMF-070002	MAGNETO STARTOR	1	8.82
3	XT90GK-147FMF-070003	WIRE CLAMP	1	0.29
4	XT90GK-147FMF-070004	GASKET, L COVER	1	0.29
5	XT90GK-147FMF-070005	POSITION PIN 8×12	2	0.15
6	XT90GK-147FMF-070006	ADJUSTING COVER(BIG)	1	0.44
7	XT90GK-147FMF-070007	“O”RING 25×2.4	1	0.15
8	XT90GK-147FMF-070008	ADJUSTING COVER(SMALL)	1	0.29
9	XT90GK-147FMF-070009	“O”RING 18.5×2.5	1	0.03
10	XT90GK-147FMF-070010	BOLT M6×10	1	0.03
11	XT90GK-147FMF-070011	BOLT M6×12	2	0.03
12	XT90GK-147FMF-070012	BOLT M6×32	2	0.03
13	XT90GK-147FMF-070013	BOLT M6×50	1	0.06
14	XT90GK-147FMF-070014	BOLT M6×70	1	0.09
15	XT90GK-147FMF-070015	MAGNETO ROTOR	1	8.82



NO.	Part No.	Description in English	Qty	Price
1	XT90GK-147FMF-080001	STARTING MOTOR	1	11.76
2	XT90GK-147FMF-080002	STARTING GEAR	1	2.94
3	XT90GK-147FMF-080003	DISK INSULATOR	1	2.06
4	XT90GK-147FMF-080004	"O"RING 107×2	1	0.29
5	XT90GK-147FMF-080005	OIL SEAL 30×42×4	1	0.59
6	XT90GK-147FMF-080006	OIL SEAL 18.9×28×5	1	0.59
7	XT90GK-147FMF-080007	STARTING CHAIN	1	2.94
8	XT90GK-147FMF-080008	CLUTCH BUSH	1	0.15
9	XT90GK-147FMF-080009	CLUTCH	1	3.68
10	XT90GK-147FMF-080010	ANTI—MOVING SET,STARTING GEAR	1	2.06
11	XT90GK-147FMF-080011	BOLT M6×12	1	0.06
12	XT90GK-147FMF-080012	BOLT M6×12	2	0.06
13	XT90GK-147FMF-080013	NUT M10	1	0.06
14	XT90GK-147FMF-080014	GUIDE, START CHAIN	1	0.59
15	XT90GK-147FMF-080015	TIGHTENING PLATE	1	0.59
16	XT90GK-147FMF-080016	BOLT M6×45	3	0.06



NO.	Part No.	Description in English	Qty	Price
1	XT90GK-147FMF-090001	R, CRANKCASE COVER	1	16.18
2	XT90GK-147FMF-090002	L, CRANKCASE COVER	1	16.18
3	XT90GK-147FMF-090003	SHAFT 6201	1	0.88
4	XT90GK-147FMF-090004	SHAFT 6203	1	0.88
5	XT90GK-147FMF-090005	SHAFT 6203	1	0.88
6	XT90GK-147FMF-090006	SHAFT 6001	1	0.59
7	XT90GK-147FMF-090007	LAYSHAFT OIL SEAL 17×29×5	1	0.18
8	XT90GK-147FMF-090008	BOLT M12×15	1	0.29
9	XT90GK-147FMF-090009	DOUBLE-ENDED BOLT M6×198	2	0.59
10	XT90GK-147FMF-090010	DOUBLE-ENDED BOLT M6×205	2	0.59
11	XT90GK-147FMF-090011	BREATHER PIPE	1	0.29
12	XT90GK-147FMF-090012	GASKET	1	0.29
13	XT90GK-147FMF-090013	POSITION PIN 8*14	2	0.15
14	XT90GK-147FMF-090014	BREATHER PIPE CLIP	2	0.15
15	XT90GK-147FMF-090015	BOLT M6×65	4	0.29
16	XT90GK-147FMF-090016	BOLT M6×60	2	0.15
17	XT90GK-147FMF-090017	BOLT M6×50	1	0.15
18	XT90GK-147FMF-090018	BOLT M6×40	1	0.15
19	XT90GK-147FMF-090019	COPPER GASKET 6.2×13.0×1.8	3	0.15
20	XT90GK-147FMF-090020	ALUMINUM GASKET 6.5×13.0×1.8	1	0.15
21	XT90GK-147FMF-090021	NUT M6	4	0.03

